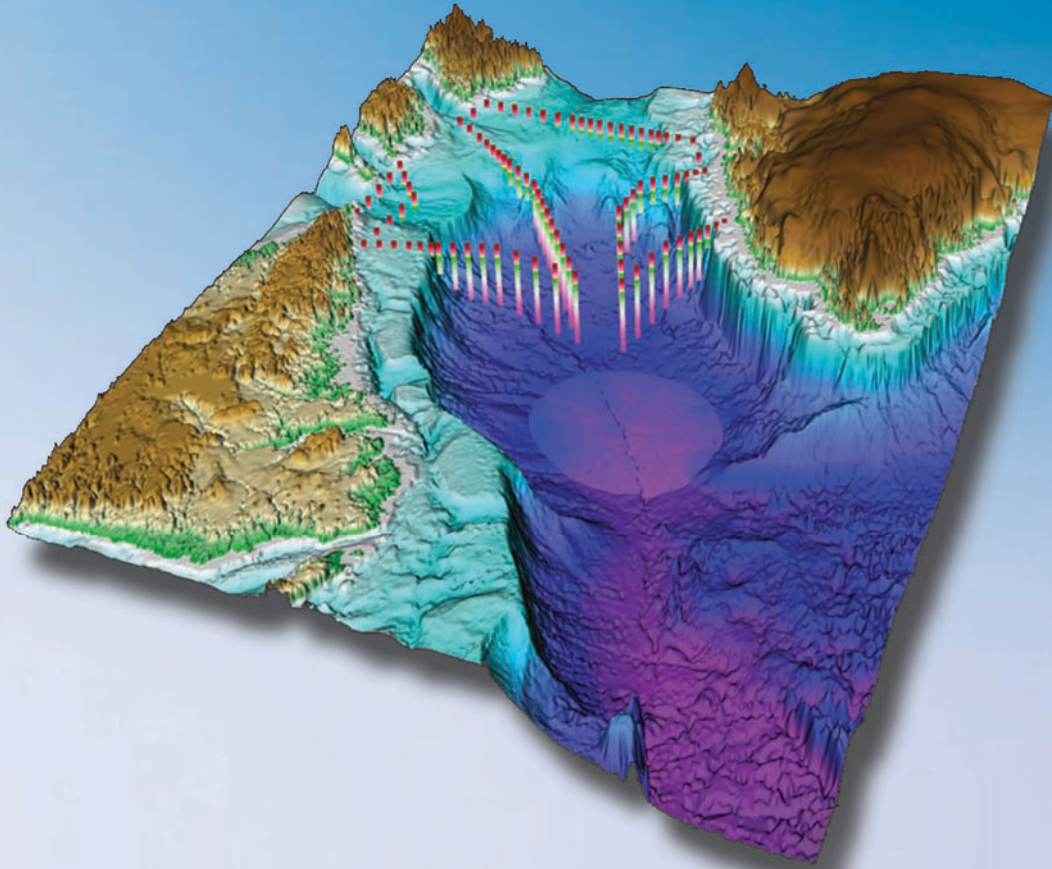


[www.goldensoftware.cz](http://www.goldensoftware.cz)

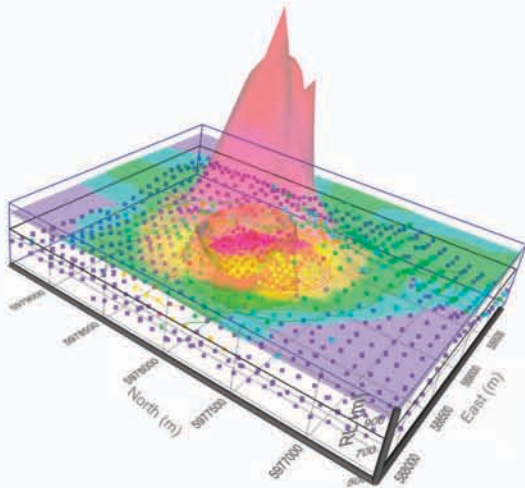
# Your 3D Data Visualization Solution



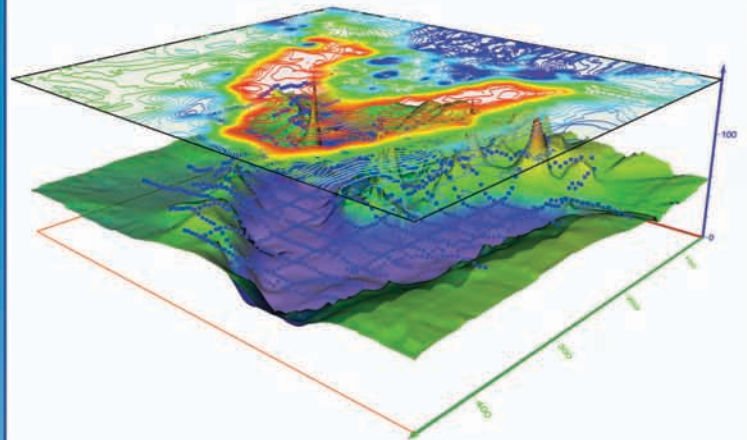
# VOXLER<sup>®</sup> 2

Golden Software, Inc.

# Voxler – See Your Data in a New Dimension



Display sample sites using a scatter plot over a 3D isosurface with a contour slice.  
Image courtesy of Bernhard Hochwimmer, Dart Mining NL, Australia.

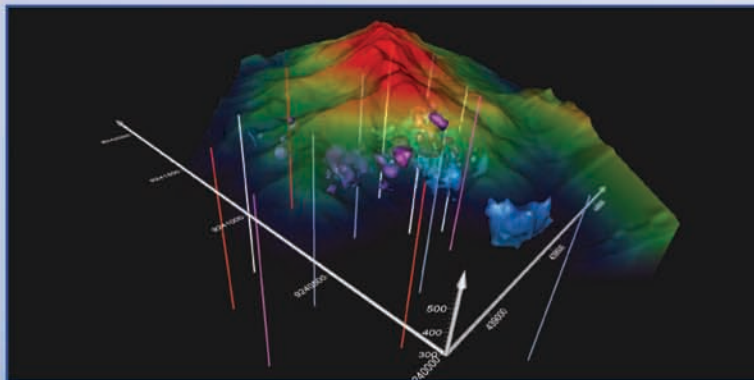


Create a colorful contour map of resistivity values and combine it with a 3D surface map showing the elevations throughout the study.

## Take Advantage of Voxler's Power & Functionality

### Voxler 2 delivers:

- NEW** — Import vector files
- NEW** — Capture video animation
- NEW** — Automate repetitive tasks with scripts
- NEW** — Undo and redo commands
- NEW** — 64-bit installation option
- NEW** — Geotiff import in real-world XY location
- IMPROVED** — Import capabilities
- IMPROVED** — Export options
- IMPROVED** — Speed and functionality
- IMPROVED** — User interface



Combine 3D drill holes, topography, and isosurfaces on a dramatic black background to outline an ore body in a mining area.

**Voxler** takes your complex, raw data and models it in a rich, interactive, 3D visual environment. The updated, easy-to-understand user interface allows you to quickly visualize and examine your data.

Importing data into **Voxler** is easy. **Voxler's** powerful data loader quickly reads your data and allows you to easily filter anomalies, duplicates, or areas you want to eliminate. Interactively manipulate your data while viewing the results.

Personalize **Voxler** with a multitude of settings for repeatedly and concisely illustrating your data. **Voxler** provides easy access to the most frequently used features and settings, enabling you to quickly create a great 3D map or model from any data set.

Effortlessly rearrange your image's components. Rotate, slice, and dissect your image in real-time by simply dragging your mouse.

You have complete control of the primary and intermediate calculations of your data set, producing the most accurate image possible. **Voxler's** gridding process uses **Golden Software's** renowned advanced gridding algorithms and techniques.

**Voxler's** equation analyzer is unparalleled in functionality and features. All of **Voxler's** user-friendly tools are available whether visualizing an equation or random data.

Display your data in a variety of formats:

- |                     |                |
|---------------------|----------------|
| 3D volrender        | Oblique images |
| Isosurfaces         | Scatter plots  |
| Contours            | Stream lines   |
| 3D slices           | Vector plots   |
| Orthographic images |                |

# New in Voxler 2 – Unleash Your 3D Potential

**Import Vector Formats:** New import options include popular BLN, DDF, DLG, DXF, E00, GSB, GSI, MIF, SDTS, and SHP vector format files, giving you increased options to explore and generate data-rich images.

**Capture Video Animation:** Create an AVI file to share your 3D models using **Voxler's** new video capture feature. Capture each rotation, zoom, and pan motion, in addition to all property changes to highlight and minimize data features.

**Automate Repetitive Tasks:** Save time by creating your own scripts to automate repetitive tasks. Operations performed interactively can be controlled through an automation-compatible programming language like Visual Basic (VB), C++, Python or Perl. **Voxler** includes **Scripter™**, a VB-compatible programming environment enabling you to write, edit, debug, and run your scripts.

**Undo/Redo Commands:** The new undo and redo commands allow you to quickly re-evaluate recent modifications. Simply click on the undo or redo arrows on the toolbar to step back through your recent changes until you reach the point where your model looks exactly like you want it.

**Import Georeferenced Images:** Save time by importing geotiff image files (BMP, TIF, JPG, SID, etc.) in their real-world XY coordinates.

**64-bit Installation Option:** Take advantage of Windows 64-bit versions to access more memory using **Voxler**.

**Excel 2007 Compatible:** **Voxler** now supports Excel 2007 XLSX files for more compatibility with today's software.

**Locate Your 2D Grids Correctly:** Import your Surfer® GRD, DEM, and other 2D lattices with the option to import the height of the grid as both the Z and C value. This allows easier scaling of maps using these formats.

**Expanded Import Capabilities:** Among other import improvements, you can now import SID files directly into **Voxler**.

**Database Support:** Import your Access MDB and dBase DBF database files directly into **Voxler**.

**Ultimate Data Compatibility:** Import your data from most popular formats, including Globe DEM, Arc/Info, ESRI, CPS-3, Zycore Z-MAP Plus, Banded Grid BIL, ETOPO5, ER Mapper, Geosoft, Grid eXchange, and Idrisi grid formats.

**Enhanced Export Options:** Specify the resolution and quality of your files when exporting to all image formats. Specify high-resolution, press-quality formats for printing or low-resolution for easier sharing and saving disk space.

**New Export Formats:** Export to a variety of data file formats, including these new raster export formats: EPS, PCX, and PDF.

**Increased Speed and Functionality:** You will benefit from **Voxler's** enhanced user experience. **Golden Software** updated the underlying system to help you produce better images in less time.

**Superior User Interface:** The updated user interface increases your productivity with the addition of undo and redo commands, more intuitive icons, customizable mouse and keyboard settings, and movable task areas and view windows you can recolor if desired.

**Increased Ease of Use:** Have you ever returned to an old image to wonder how you created it? With the powerful network window, the source files, transformations, and calculations are visually connected to record your settings for the current data, or for use with a new data set.

**Always Up-to-Date:** Know you are always using the latest version of **Voxler 2** with the new automatic update checker.

**Efficient Error Resolution:** The automatic error logging tool lets us know you received an error message. Should this happen, a member of our technical support team will contact you to resolve the error and get your project moving again.

Download Voxler 2 now at [www.goldensoftware.com](http://www.goldensoftware.com)

# Voxler Users

**Geoscientists** studying seismic data, drill holes, petrography, and remote sensing surveys

**Environmental Professionals** analyzing groundwater and soil contaminant studies

**Meteorologists** compiling atmospheric studies

**Oceanologists** evaluating water temperature, contaminants, and salinity surveys

**Biologists** conducting organism sampling

**Bio-Technicians** visualizing confocal microscopy data

**Engineers** showing parameters distributed throughout the volume of an object

**Engineers** requiring visualization of computational fluid dynamics

**Research and Development Groups** performing numerical simulations

**Geo-Statisticians** illustrating reservoir characterizations

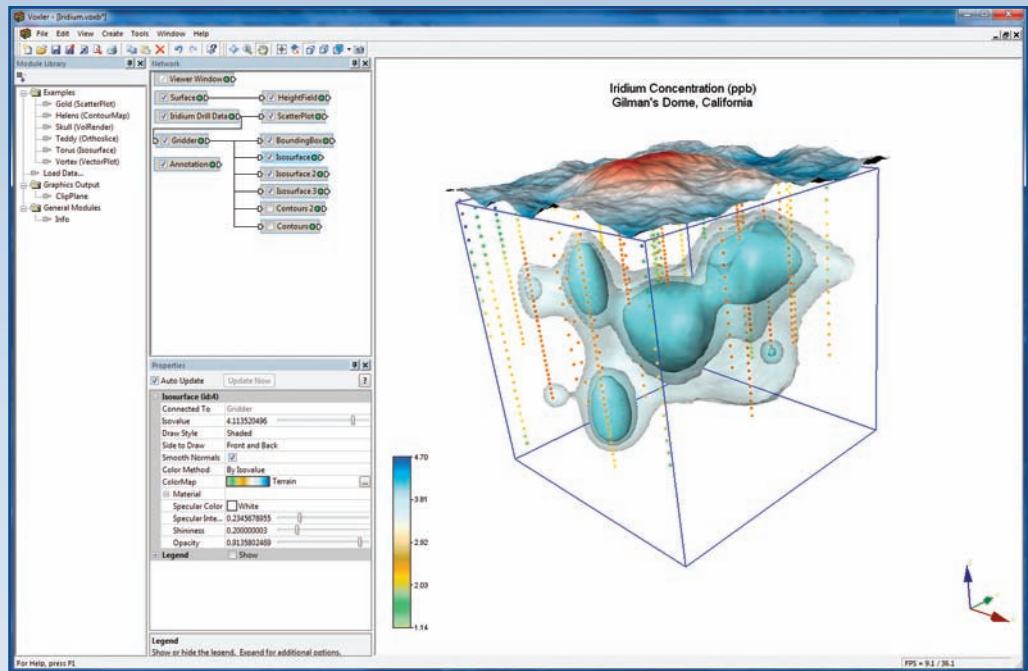
**Seismologists** modeling velocity

**Physicists** tracking particles

**GIS Researchers** mapping subsurfaces

**Medical Professionals** analyzing MRI, CT, and ultrasound scans

**Anyone** desiring to see the distribution of 3D data



This Voxler screenshot shows a dazzling combination of three images: ground surface, boreholes, and iridium concentration values. The network and properties windows are open on the left side for quick edits.

# Customer Comments

*"I'm enthusiastic about **Voxler!** Nice layout, fast running."*

Dr. Niels Hartog, Research Fellow, University of Waterloo

*"Overall, a great piece of software... The abilities to rotate displays and adjust transparency are awesome."*

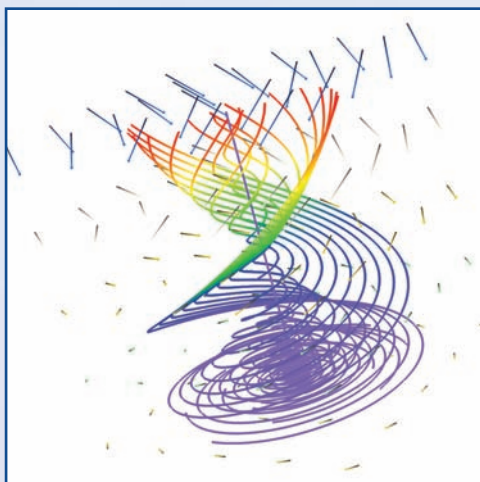
Gary Rice, President, GeoFrontiers

*"I was very impressed by the real-time dynamic cutting contour plane – awesome! You can be very proud of this software."*

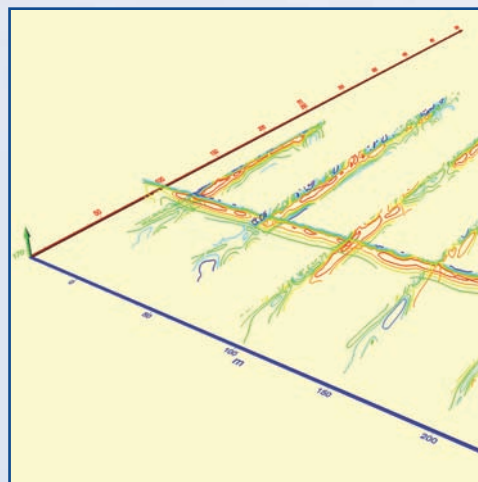
Dave Eisler, Head Developer, Pixelmetrics

*"Like other **Golden Software** products it is easy to learn and use, and you can't beat the price! It looks like **Golden Software** has another winner with **Voxler.**"*

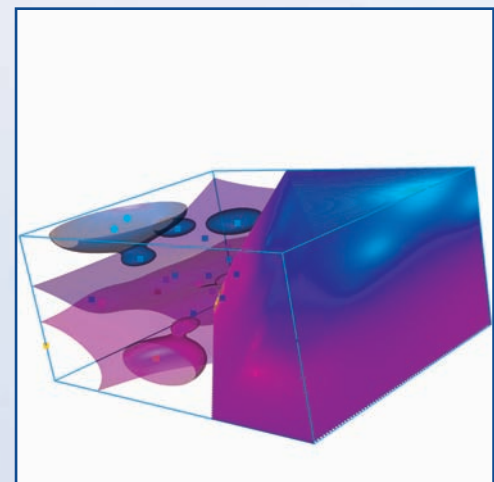
Dr. Dave Rich, President, Geotech Computer Systems



Color-coded lines indicate the path of particles released in a velocity field. Vectors show magnitude and direction of the field.



Display cross-sectional contour slices of resistivity values from Dipole Electromagnetic Profiling.



Slice your view to reveal the inner workings of your model. Differentiate surfaces with different colors.

# Benefits of Voxler – Powerful, Flexible, Complete

## User Friendly

**Superior Visual Output:** **Voxler** provides integrated software for assimilating, controlling, and clearly visualizing your data and images. Create stunning colorful graphical output for your 3D models with more choices resulting in superior image quality.

**Update Graphics on the Fly:** Update a graphic with a changed data file or substitute a new data file. Watch the output graphics update in real time.

**Easy Animation:** Gain a more complete understanding of your model by spinning your image in any direction. Just a quick movement of the mouse sets your graphic in motion.

**Unmatched Input and Output:** **Voxler** is compatible with many import and export formats, software systems, and printers to produce extremely high resolution smoothed images. When printing, tile large images across multiple pages to be sure you have all the information you need.

**Quickly Share Your Work in Progress:** Copy a snapshot of your current view to the Windows Clipboard to paste it into a document or file in another Windows program, like Word or Outlook.

**Spotlight a Key Area:** Shine a fully adjustable light on your model from any angle.

**Draw with Style:** Accentuate your data using various still or animating draw styles with formats for best data display.

**Write as You Like:** Add text annotations and labels as needed to your images in the font and color you prefer.

**Medical Research:** Explore 3D medical imagery from CT, MRI, and ultrasound scanning. **Voxler's** architecture is flexible, dynamic, and powerful. Easily map colors to dynamic variables.

**Big Value, Low Cost:** Get all the functionality of a high-end 3D visualization package at a fraction of the cost. **Voxler** is a fully integrated, complete package.

## Image Customization

**Look Inside Your Model:** Slice away parts of your data to uncover hidden regions. Internal trends or bodies of interest become crystal clear. You have complete control over the transparency of each object, allowing you to see the core of your data.

**Render 3D Volumes:** Impressive, skillfully colored volumes are a snap even for extremely large data sets. **Voxler's** advanced settings provide the highest level of image understanding.

**Calculate and Display Isosurfaces:** Just as contour lines delineate lines of equal value in two dimensions, isosurfaces expand the concept to define a surface of equal value in three dimensions.

**Display Streamlines:** See trends in your data by tracing the paths of objects in a gradient field.

**See Trends with Vector Plots:** **Voxler** makes it easy to find your way in complex multi-dimensional data. Create a vector plot using 3D color vectors to clearly see trends and movement of particles.

**Add Axes to Show X, Y, and Z Values:** Display the numerical values for the X, Y, and Z coordinates as color-coded axes to clarify the relationships.

**Create Colorful Contour Maps:** Cut through confusing data sets and display a data slice at any angle as a contour map.

**Show the Limits of the Data:** Add a boundary line box around your data to precisely delineate where your data stops.

**Display Surfer® Grid and DEM Files:** Bring your Surfer GRD and topographic DEM files into a 3D environment with ease.

**Show Scatter Plots of Data Points in 3D:** Connect a scatter plot to the raw data set to immediately recognize data values and trends. Map different colors to the points based on data values. The dynamic color map editor is always available for powerful editing capabilities.

**Apply Standard and Custom Colorization to Data:** Your images will look their best with **Voxler**. Use the default colors, select new colors from the extensive palette of preset colors, or define and save your own color palettes for perfect graphical output.

**Display Legends:** Add understanding to your maps and data with legends. You have complete control of the legend's color ranges, tick marks, labels, and location on the graphic.

**Define Custom Exclusion Filters to Remove Unwanted Data:** Stop searching through unimportant data to find hidden data trends. Easily and efficiently exclude unwanted data from the model. Define your own filters or apply one of **Voxler's** 30 pre-defined filters.

## Superior Gridding

**Extrapolate 3D Grids from Randomly Spaced XYZC Data Files:** **Golden Software** leads the industry in gridding quality and performance, providing precise images from your random point data. Gridding your data in **Voxler** increases your understanding of complex data sets.

**Use Data Grids of Many Dimensions:** Easily display 1D, 2D, and 3D data grids with **Voxler**.

**Use Data Grids with Many Values:** Display scalar 3D data grids with one value at each XYZ point, and vector 3D data grids with multiple values at each XYZ point.

**Display Uniform, Rectilinear, and Curvilinear 3D Data Grids:** Why settle for one data source type for your 3D models? Take advantage of **Voxler's** multiple data format import for plotting and modifying your images.

**Test Your Data:** Generate a variety of test data grids to determine which best suits your needs.

## Import Formats

10G, ADF, AGR, AIG, AM, AN1, AN2, ASC, ASI, BIL, BIN, BIP, BLN, BMP, BSQ, BW, COL, CPS, CPS-3, CSV, DAT, DBF, DCM, DDF, DEM, DIC, DICOM, DLG, DOS, DT0, DT1, DT2, DXF, E00, ERS, FLD, FLT, GGF, GIF, GRD, GSB, GSI, GXF, HDF, HDR, IMG, INFO, IV, JPG, LAT, LGO, LGS, MDB, MIF, P3D, PBM, PCX, PGM, PLT, PLY, PNG, PNM, PPM, RAS, RAW, RGB, RGBA, RST, SEGY, SGY, SHP, SID, SLK, STDS, STK, SUN, TGA, TIF, TXT, VDAT, VTK, WK1, WK2, WK3, WK4, WKS, WR1, WRK, X, XIMG, XLS, XLSX, XYZ, ZMAP, ZYC, ZYCOR

## Image Export Formats

BMP, BW, EPS, GIF, IV, JPG, PBM, PCX, PDF, PGM, PNG, PNM, PPM, RAS, RGB, RGBA, SUN, TGA, TIF, X, XIMG

## Save Data Export Formats

ADF, AGR, AIG, AM, ASC, BIL, BIN, BIP, BLN, BNA, BSQ, COL, CSV, DAT, DEM, ERS, FLD, FLT, GGF, GRD, GXF, HDF, IMG, LAT, P3D, RAW, SLK, TXT, VDAT, VTK, XLS, XYZ

## System Requirements

Windows XP, Vista, 7, or higher

512 MB RAM minimum for simple data, 1 GB RAM recommended

100 MB free hard disk space

1024x768x16-bit color minimum resolution

Video driver with OpenGL acceleration, highly recommended

Download a free demo at [www.goldensoftware.com](http://www.goldensoftware.com)

## Free Technical Support

What do you do when you have a question? Take your pick! Consult the easy-to-read *Getting Started Guide*, check the dynamic online help, browse the **Voxler** support forum, knowledge base, or **Voxler** FAQs on the **Golden Software** website, or simply give us a call.

Our knowledgeable and friendly Technical Support staff is available to answer your questions Monday through Friday, 8am - 5pm Mountain Time. Technical Support is available by phone, fax, or email — and always free to all users.

### Technical Support Survey Responses, February 2010:

*"A major factor in my continued use of Golden Software's products apart from the quality of the programs is the timely professional customer service you provide."*

*"Probably one of the quickest and most helpful responses I have had in recent times from a software supplier. Thank you."*

### Cover Image

Image courtesy of Igor Yashayaev, Ocean Circulation Section, Ocean Sciences Division, Bedford Institute of Oceanography, Dartmouth, Nova Scotia, Canada.

## About Golden Software

Founded in 1983, **Golden Software** is a leading provider of affordable scientific graphics software. Our customer base includes over 100,000 users involved in hydrocarbon exploration, mining, geosciences, engineering, business, education, and medicine in over 179 countries and territories. **Golden Software** offers six products:

**Voxler**® for 3D data visualization

**Surfer**® for gridding, contouring, and 3D surface mapping

**Grapher**™ for 2D and 3D graphing

**MapViewer**™ for thematic mapping and spatial analysis

**Didger**® for digitizing and coordinate conversion

**Strater**® for well log and bore hole plotting

All products are user-friendly, include numerous advanced features, and support all popular import and export formats. **Golden Software** keeps customers satisfied by providing them with high-quality, easy-to-use software and the best technical support offered anywhere.



Golden Software, Inc. • 809 14th Street, Golden, Colorado 80401 U.S.A.

800-972-1021 • 303-279-1021 • FAX 303-279-0909 • [www.goldensoftware.com](http://www.goldensoftware.com)



Explore vibrant 3D data visualization by layering a transparent contour map over a height field as viewed from above.

**Download a Voxler 2 demo now to explore the 3D depth of your own data.**

## Save Time & Money, Download

Switch to **Voxler 2** and see how easy visualizing your 3D data can be! We are so sure you will like **Voxler** better than your current 3D visualization software, we offer a 30-day, money-back guarantee.

Your **Voxler** package includes the **Voxler 2** program, *Getting Started Guide*, free technical support, and free **Voxler 2** updates.

Place your order using our secure online order form at [www.goldensoftware.com](http://www.goldensoftware.com) and choose to download **Voxler**. Shipping charges are waived if you choose to download only.